

## 2W series solenoid valve

Symbol :



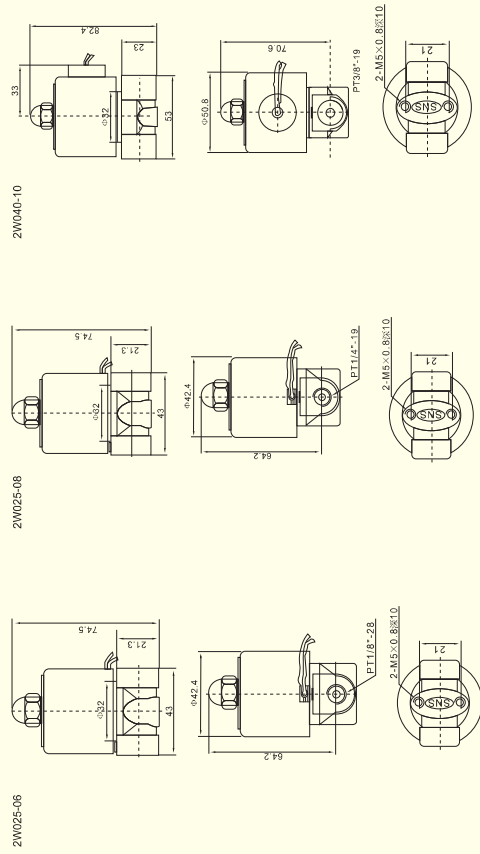
### Reference models

2W	025	06	AC110V
Specification and model	Flow diameter 025:2.5mm 040:4.0mm	Port size 06:1/8" * 08:1/4" * 10:3/8" *	Standard voltage DC12V DC24V AC24V/50/60HZ AC110V/50/60HZ AC220V/50/60HZ AC380V/50/60HZ
Two-hole two gang solenoid valve			
Normal closed (NC)			

### Technical specifications

Model	2W025-06	2W025-08	2W040-10
Servicing fluid	Air, water, oil, gas		
Acting mode	Direct acting		
Type	Normally closed (NC)		
Flow diameter (mm)	2.5	4.0	
CV value	0.23	0.60	
Thread size	1/8" *	1/4" *	3/8" *
Fluid viscosity	Under 20CST		
Operating pressure	0-7kgf/cm <sup>2</sup>		
Maxi withstand pressure	10kgf/cm <sup>2</sup>		
Fluid and ambient temperature	-5-85°C		
Voltage range	±10%		
Weight (kg)			
Material of main parts	Body	Brass	
	Seating	NBR	

### Outline dimensions



## 2W series solenoid valve

Symbol :



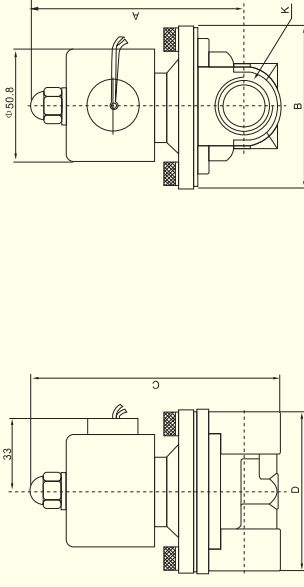
### Reference models

2W	160	10	AC110V
Specification and model	Flow diameter 160:16mm 200:20mm 250:25mm 350:35mm 400:40mm 500:50mm	Port size 10:1/2" * 15:3/4" * 20:3/4" * 25:1" * 35:1 1/4" * 40:1 1/2" * 50:2" *	Standard voltage DC12V DC24V AC24V 50/60HZ AC110V 50/60HZ AC220V 50/60HZ AC380V 50/60HZ
Two-hole two gang solenoid valve			
Normal closed (NC)			

### Technical specifications

Model	2W160-10	2W200-20	2W250-25	2W350-35	2W400-40	2W500-50
Servicing fluid	Air, water, oil, gas					
Acting mode	Direct acting					
Type	Normally closed (NC)					
Flow diameter (mm)	16	20	25	35	40	50
CV value	4.8	7.6	12	24	29	48
Thread size	3/8" *	1/2" *	3/4" *	1 1/4" *	1 1/2" *	2" *
Fluid viscosity	Under 20CST					
Operating pressure	Water and oil: 0-5.0kgf/cm <sup>2</sup> , air: 0-7.0kgf/cm <sup>2</sup>					
Maxi withstand pressure	10kgf/cm <sup>2</sup>					
Fluid and ambient temperature	-5-85°C					
Voltage range	±10%					
Weight (kg)						
Material of main parts	Body	Brass				
	Seating	NBR				

### Outline dimensions



Model	A	B	C	D	K
2W160-10	93	57	106.5	69	PT1/2"
2W160-15	93	57	106.5	69	PT1/2"
2W200-20	100	57	116.5	73	PT3/4"
2W250-25	105	73.4	126	97	PT1"
2W350-35	142	95	172	123	PT1 1/4"
2W400-40	142	95	172	123	PT1 1/2"
2W500-50	172	123	109	168	PT2"