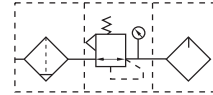


A/B series air filter combination (two-union)

Symbol:



AFC2000

BFC4000

Reference model

AFC

Series code
AFC: AC series
BFC: BC series

2000

Port size
1500: 1/8 "
2000: 1/4 "
3000: 3/8 "
4000: 1/2 "

M

Drain model
Nil: Differential pressure drain
M: manual drain
A: Automatic drain

Technical specifications

Model	AFC1500 AFC1500A AFC1500M	AFC2000 AFC2000A AFC2000M	BFC2000 BFC2000A BFC2000M	BFC3000 BFC3000A BFC3000M	BFC4000 BFC4000A BFC4000M	
Components	Filter, Pressure reduce valve Lubricator	AFR1500 AL1500	AFR2000 AL2000	BFR2000 BL2000	BFR3000 BL3000	BFR4000 BL4000
Port size (PT)	1/8 "	1/4 "	1/4 "	3/8 "	1/2 "	
Working medium	Air					
Guaranteed withstand pressure	0.5~8.5bar kgf/cm ²					
Highest operating pressure	9.5kgf/cm ²					
Ambient temperature	15.0kgf/cm ²					
Nominal filtration diameter	5-60°C					
Recommended lubrication oil	40 μ M					
Water filtration bowl capacity	15CC		60CC			
Oil bowl capacity	25CC		90CC			
Weight (kg)	0.7		0.7			
Material of main parts	Body	Aluminum alloy				
	Bowl	PC				
	Bowl guard	AC1500 ~ AC2000: without, BC2000 ~ BC4000: with (plastic)				

Outline dimension

