

## CQ2 series thin cylinder



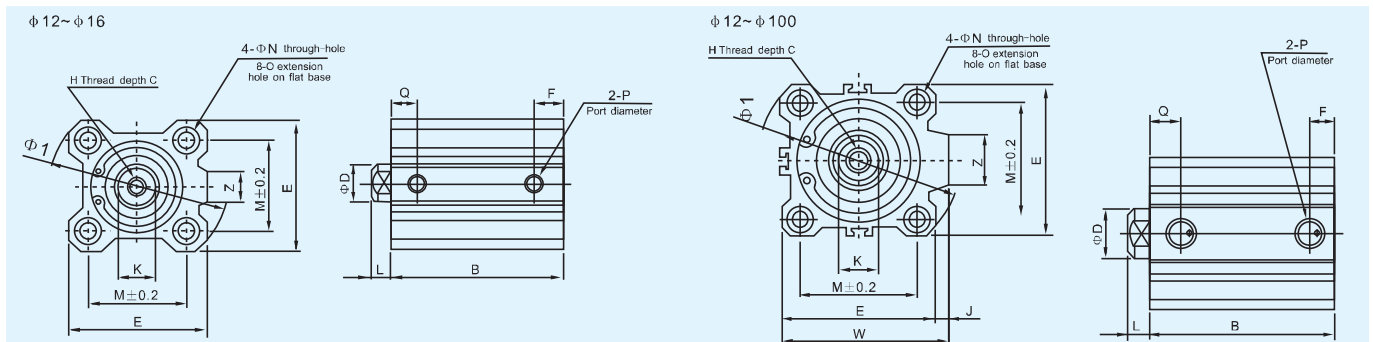
CQ2B32×25

CQ2BJ40×20-15

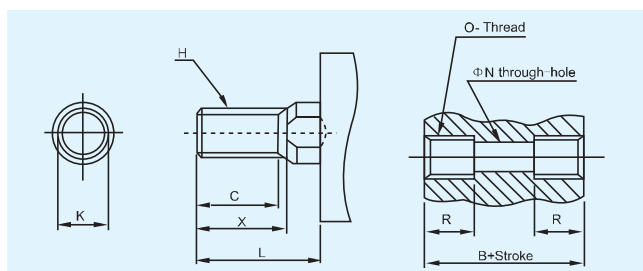
### Technical specifications

Inner diameter (mm)	12	16	20	25	32	40	50	63	80	100
Acting mode	Repeated move									
Working medium	Air (Cleaned by 40µm filter)									
Operating pressure	0.1~0.9Mpa(kgf/cm <sup>2</sup> )									
Guaranteed withstand pressure	1.35Mpa(13.5kgf/cm <sup>2</sup> )									
Working temperature	-5~70°C									
Buffering mode	Without									
Port size	M5			1/8"		1/4"		3/8"		
Body material	Aluminum alloy									

### Outline dimensions



Inner diameter (mm)	B	φD	E	F	H	C	I	J	K	L	M	φN	φO	P	Q	W	Z
12	17+st	6	25	5	M3×0.5	6	32	-	5	3.5	15.5	3.5	6.5depth3.5	M5×0.8	7.5	-	-
16	18.5+st	8	29	5.5	M4×0.7	8	38	-	6	3.5	20	3.5	6.5depth3.5	M5×0.8	8	-	10
20	19.5+st	10	36	5.5	M5×0.8	7	47	-	8	4.5	25.5	5.5	9depth7	M5×0.8	9	-	10
25	22.5+st	12	40	5.5	M6×1.0	12	52	-	10	5	28	5.5	9depth7	M5×0.8	11	-	10
32	23+st	16	45	7.5	M8×1.25	13	60	4.5	14	7	34	5.5	9depth7	1/8	10.5	49.5	18
40	29.5+st	16	52	8	M8×1.25	13	69	5	14	7	40	5.5	9depth7	1/8	11	57	18
50	30.5+st	20	64	10.5	M10×1.5	15	86	7	17	8	50	6.6	11depth3	1/4	10.5	74	22
63	36+st	20	77	10.5	M10×1.5	15	103	7	17	8	60	9	14depth10.5	1/4	15	84	22
80	43.5+st	25	98	12.5	M16×2.0	21	132	6	22	10	77	11	17.5depth13.5	3/8	16	104	26
100	53+st	30	117	13	M20×2.5	27	156	6.5	27	12	94	11	17.5depth13.5	3/8	23	123.5	26
125	83+st	35	142	24.5	M22×2.5	30	190	11	32	16	114	12.5	M14×2, φ21.2	3/8	24.5	-	-



### Reference models

CQ2	B	50×50	D	M
CQ2: Standard type CDQ2: Standard type with magnet	Mounting mode: B: Through-hole A: Inner thread on two ends	Cylinder inner diameter x Stroke	Acting mode D: Double acting S: Single acting (Pre-shrink) T: Single acting (Pre-extend)	Thread of piston rod Nil: Inner thread M: Outer thread

### Selection of sensor switch

Inner diameter	16	20	25	32	40	50	63	80	100	125	160
Mode											
Sensor switch	D-A73L D-A93										

### Stroke

Inner (mm)	Standard Stroke (mm)	Maxi traveling distance (mm)	Permissible (limit) traveling distance (mm)
12	5 10 15 20 25 30 35 40 45 50	50	60
16	5 10 15 20 25 30 35 40 45 50	50	60
20	5 10 15 20 25 30 35 40 45 50 55 60 65 70 75 80	80	90
25	5 10 15 20 25 30 35 40 45 50 55 60 65 70 75 80	80	90
32	5 10 15 20 25 30 35 40 45 50 55 60 65 70 75 80 85 90 95 100	130	150
40	5 10 15 20 25 30 35 40 45 50 55 60 65 70 75 80 85 90 95 100	130	150
50	5 10 15 20 25 30 35 40 45 50 55 60 65 70 75 80 85 90 95 100	130	150
63	5 10 15 20 25 30 35 40 45 50 55 60 65 70 75 80 85 90 95 100	130	150
80	5 10 15 20 25 30 35 40 45 50 55 60 65 70 75 80 85 90 95 100	130	150
100	5 10 15 20 25 30 35 40 45 50 55 60 65 70 75 80 85 90 95 100	130	150

Note: inner thread of CQ2B100 cylinder is φ25, outer thread is φ30 piston rod