

## CQS series thin cylinder



CDQSB25-10D

CQSWB12-20D

CQSB12-20D



### Reference models

CQS	B	20×50	B	M
CQ2: Standard type CDQ2: standard type with magnet	Mounting mode: B: through-hole A: Inner thread on two sides	Cylinder inner diameter x traveling distance	Acting mode D: Repeated move S: Single-acting pre-shrink T: Single-acting pre-extend	Thread of piston rod Nil: Inner thread M Outer thread

### Stroke

Inner diameter (mm)	Standard Stroke (mm)										Maxi travelling distance(mm)	Permissible (limit) travelling distance (mm)
	5	10	15	20	25	30	35	40	45	50		
12	5	10	15	20	25	30					50	60
16	5	10	15	20	25	30					50	60
20	5	10	15	20	25	30	35	40	45	50	80	90
25	5	10	15	20	25	30	35	40	45	50	80	90

### Selection of sensor switch

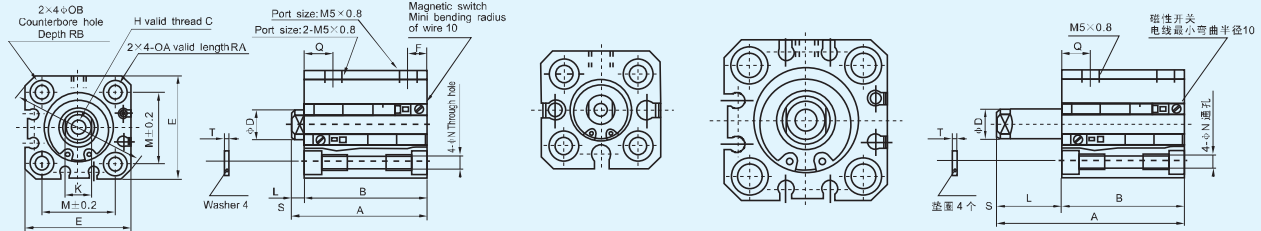
Inner diameter	12	16	20	25
Mode				
Sensor switch	D-A93			

### Technical specifications

Inner diameter (mm)	12	16	20	25
Acting mode	Repeated move			
Working medium	Air (Cleaned by 40µm filter)			
Operating pressure	0.1~0.9Mpa(kgf/cm <sup>2</sup> )			
Guaranteed withstand pressure	1.35Mpa(13.5kgf/cm <sup>2</sup> )			
Working temperature	-5~70°C			
Buffering	Without			
Port size	M5			
Body material	Aluminum alloy			

### Outline dimensions

Through hole · Screw hole on two ends for public use./CQSB CDASB



Inner diameter (mm)	Basic type													Double acting (basic type)					Built-in magnetic ring		
	C	D	E	H	I	K	M	N	OA	OB	RA	RB	T	Q	A	B	F	L	Q	A	B
12	6	6	25	M3×0.5	32	5	15.5	3.5	M4×0.7	6.5	7	4	0.5	7.5	20.5+st	17+st	5	3.5	7.5	25.5+st	22+st
16	8	8	29	M4×0.7	38	6	20	3.5	M4×0.7	6.5	7	4	0.5	7.5	22.5+st	17+st	5	3.5	7.5	25.5+st	22+st
20	7	10	36	M5×0.8	47	8	25.5	5.4	M6×1.0	9	10	7	1	9	24+st	19.5+st	5.5	4.5	9	34+st	29.5+st
25	12	12	40	M6×1.0	52	10	28	5.4	M6×1.0	9	10	7	1	11	27.5+st	22.5+st	5.5	5	11	37.5+st	32.5+st

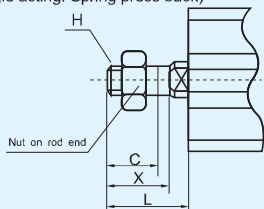
Single acting: Spring press out

Cylinder diameter (mm)	Standard type					Built-in magnetic ring			
	A	B	F	L		A	B		
	5st	10st	5st	10st		5st	10st	5st	10st
12	25.5	30.5	22	27	5 3.5	30.5	35.5	27	32
16	25.5	30.5	22	27	5 3.5	30.5	35.5	27	32
20	29	34	24.5	29.5	5.5 4.5	39	44	34.5	39.5
25	32.5	37.5	27.5	32.5	5.5 5	42.5	47.5	37.5	42.5

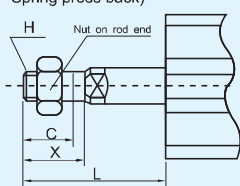
Single acting: Spring press out

Cylinder diameter (mm)	Standard type					Built-in magnetic ring			
	A	B	L	Q		A	B		
	5st	10st	5st	10st		5st	10st	5st	10st
12	30.5	40.5	22	27	8.5 13.5 7.5	30.5	35.5	27	32
16	30.5	40.5	22	27	8.5 13.5 7.5	30.5	35.5	27	32
20	34	39	24.5	29	9.5 14.5 9	39	44	34.5	39.5
25	37.5	42.5	32.5	32.5	10 15 11	42.5	47.5	37.5	42.5

Outer thread of rod end (Double acting / Single acting: Spring press back)



Outer thread of rod end (Single acting: Spring press back)



Cylinder diameter (mm)	C	H	L	X
12	9	M5×0.8	14	10.5
16	10	M6×1.0	15.5	12
20	12	M8×1.25	18.5	14
25	15	M10×1.25	22.5	17.5

内径(mm)	C	H	L(5XY)	L(10XY)	X
12	9	M5×0.8	19	12	10.5
16	10	M6×1.0	20.5	16	12
20	12	M8×1.25	23.5	20	14
25	15	M10×1.25	27.5	25	17.5