

## DNC series standard cylinder (ISO6431 standard cylinder)



DNC32-50



DNCL32-50

### Reference models

DNC	63×50	-	PPV	A
Series code	Cylinder inner diameter x traveling distance		Nil: without buffer PPV: with buffer	Nil: standard A: built-in magnetic ring
DNC: Basic type				
HNC: Axial foot base				
FNC: Front and rear flange				
SNCB: double ear base				
SNCL: single ear base				

### Selection of sensor switch

Inner diameter	32	40	50	63	80	100	125	160
Mode								
Sensor switch	DZ73							
Fixed base of sensor switch								

### Technical specifications

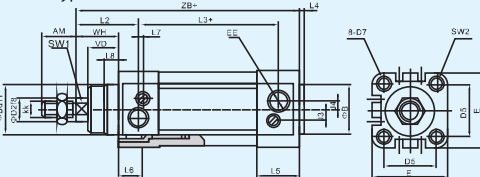
Inner diameter (mm)	32	40	50	63	80	100
Acting mode	Dual acting					
Working medium	Air (Cleaned by 40µm filter)					
Operating pressure	0.1~0.9Mpa(kgf/cm <sup>2</sup> )					
Guaranteed withstand pressure	1.35Mpa(13.5kgf/cm <sup>2</sup> )					
Working temperature	-5~70°C					
Buffering mode	Air buffering part (standard)					
Buffering distance (mm)	24		32			
Port size	1/8"	1/4"	3/8"		1/2"	
Body material	Aluminum alloy					

### Stroke

Inner (mm)	Standard Stroke (mm)													Max. traveling distance(mm)	Permissible traveling distance (mm)					
32	25	50	75	100	125	150	175	200	250	300	350	400	500	1000	2000					
40	25	50	75	100	125	150	175	200	250	300	350	400	500	600	700	800	1200	2000		
50	25	50	75	100	125	150	175	200	250	300	350	400	500	600	700	800	900	1000	1200	2000
63	25	50	75	100	125	150	175	200	250	300	350	400	500	600	700	800	900	1000	1500	2000
80	25	50	75	100	125	150	175	200	250	300	350	400	500	600	700	800	900	1000	1500	2000
100	25	50	75	100	125	150	175	200	250	300	350	400	500	600	700	800	900	1000	1500	2000
125	25	50	75	100	125	150	175	200	250	300	350	400	500	600	700	800	900	1000	1500	2000
160	25	50	75	100	125	150	175	200	250	300	350	400	500	600	700	800	900	1000	1500	2000

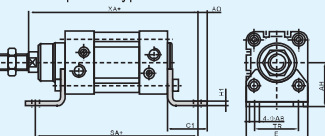
### Outline dimensions

DNC...PPV-A Basic type

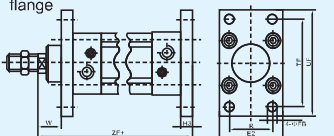


Cylinder inner diameter (mm)	AM	E	D2	D5	D7	E	EE(G)	J3	J4	KK	L2	L3	L4	L5	L6	L7	L8	SW1	SW2	VD	WH	ZB
32	22	30	12	32.5	M6	45	1/8	6	5.2	M10×1.25	41.6	62.8	4	25.1	16	3.3	10	10	6	18	26	120
40	24	35	16	38	M6	54	1/4	8	6	M12×1.25	44	77	4	29.6	16	3.6	10.5	13	6	21.5	30	135
50	32	40	20	46.5	M8	64	1/4	10	8.5	M16×1.5	51	78	4	29.6	17	5.1	11.5	17	8	28	37	143
63	32	45	20	56.5	M8	75	3/8	12.4	10	M16×1.5	54	87	4	35.6	17	6.6	15	17	8	28.5	37	158
80	40	45	25	72	M10	93	3/8	12.5	8	M20×1.5	52.4	95.2	4	35.9	17	10.5	15.7	22	10	34.7	46	174
100	40	55	25	89	M10	100	1/2	11.8	10	M20×1.5	69.8	100.4	4	38.8	100	8	19.2	22	10	38.2	51	189

DNC...PPV-A Double piston type

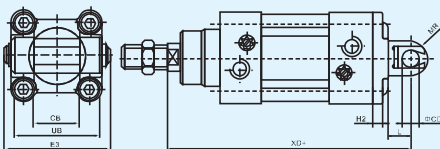


FNC...PPV-A front and rear flange Front mounting Rear mounting

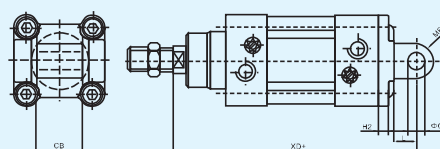


Cylinder inner diameter (mm)	AB	AH	AO	C1	E	H1	SA	TR	XA	E2	H13	H3	R	TF	UF	W	ZF
32	7	32	6.5	30.5	45	5	142	32	144	50	7	10	32	64	80	16	130
40	10	36	9	37	54	5	161	36	163	55	9	10	36	72	90	20	145
50	10	45	10.5	41.5	64	6	170	45	175	65	9	12	45	90	110	25	155
63	10	50	12.5	44.5	75	6	185	50	190	75	9	12	50	100	125	25	170
80	12	63	15	56	93	6	210	63	215	100	12	16	63	126	154	30	190
100	14	71	17.5	58.5	100	6	220	75	230	120	14	16	75	150	186	35	205

SNCB...PPV-A Double ear base



SNCL...PPV-A Single ear base



Cylinder inner diameter (mm)	CB	DB	E3	H2	L	MR	UB	XD
32	26	10	55	6	13	10	45	142
40	28	12	63	6	16	12	52	160
50	32	12	71	7	16	12	60	170
63	40	16	83	7	21	16	70	190
80	50	16	103	10.5	22	16	90	210
100	60	20	127	10.5	27	20	110	230