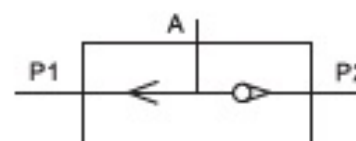


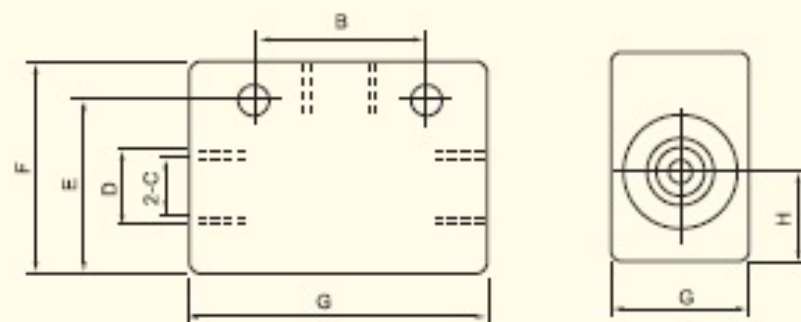
## KV series shuttle valve

Symbol :



KV-15

### Outline dimensions



Model	A	B	C	D	E	F	G	H
KV-06	38	22	1/8"	14.5	22.6	27	18	11
KV-08	47	32	1/4"	18.5	27.5	35	22	13
KV-10	61	37	3/8"	23.5	32.5	40	27	14.5
KV-15			1/2"					
KV-20			3/4"					
KV-25			1"					

### Reference models

#### KV - 06

Series code	Port size
	06:1/8"
	08:1/4"
	10:3/8"
	15:1/2"
	20:3/4"
	25:1"

### Technical specifications

Model	KV-06	KV-08	KV-10	KV-15	KV-20	KV-25
Port size	1/8"	1/4"	3/8"	1/2"	3/4"	1"
Effective sectional cross area (mm <sup>2</sup> )	10	10	21	21	47	47
CV value	0.56	0.56	1.17	1.17	2.6	2.6
Working medium	Air					
Operating pressure	0.5~9.5kgf/cm <sup>2</sup>					
Guaranteed withstand pressure	15kgf/cm <sup>2</sup>					
Working temperature	-5~60°C					
Weight (kg)						
Material of main parts	Aluminum alloy					