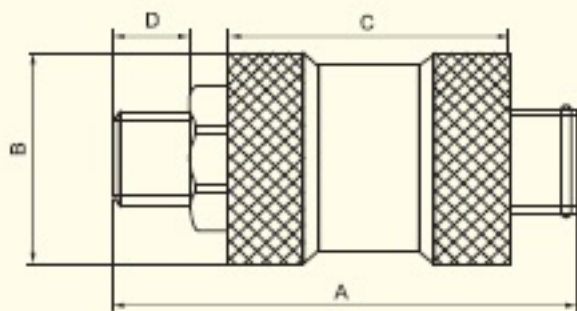




MS-22MF

## Outline dimensions



## MS series slip switch

Symbol :



## Reference models

MS	- 22	MF
Series code	Thread size	Thread type
MS: Al material	11:1/8 "	MM: dual outer worm
BMS: brass material	22:1/4 "	MF: Interior and outer worms
	33:3/8 "	FF: dual interior worms
	44:1/2 "	

## Technical specifications

Model	MS-22MF/MM/FF BMS-22MF/MM/FF	MS-33MF/MM/FF	MS-44MF/MM/FF
Working medium	Air		
Diameter of assembled pipe	1/4 "	3/8 "	1/2 "
Guaranteed withstand pressure range	0~10kgf/cm <sup>2</sup>		
Working temperature	0-70℃		
Weight (kg)			
Material of main parts	Body	MS: Al alloy, BMS: brass	
	Seal ring	NBR	

Model	A	B	C	D
MS-22MF	59	26	32	11.3
MS-33MF	59	31	32	11.3
MS-44MF	91	39	49	12