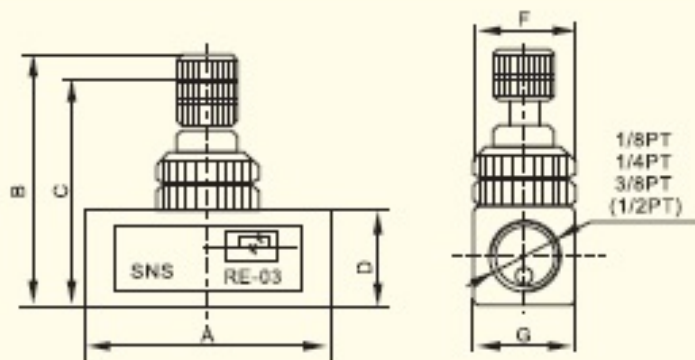




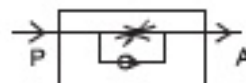
RE-04

### Outline dimensions



## RE series flow control valve

Symbol :



### Reference models

#### RE - 01

Series code	Port size
	01:1/8 "
	02:1/4 "
	03:3/8 "
	04:1/2 "

### Technical specifications

Model	RE-01	RE-02	RE-03	RE-04
Working medium	Air			
Diameter of assembled pipe	1/8 "	1/4 "	3/8 "	1/2 "
Operating pressure	0~10kgf/cm <sup>2</sup>			
Working temperature	0~70℃			
Weight (kg)				
Material of main parts	Body	Aluminum alloy		
	Seal ring	NBR		

Model	A	B	C	D	E	F	G
RE-01	46	48	44	11	19	19	19
RE-02	46	48	44	44	49	49	49
RE-03	56.4	63	53	12	25.5	24.7	25.5
RE-04	56.4	63	53	12	25.5	24.7	25.5