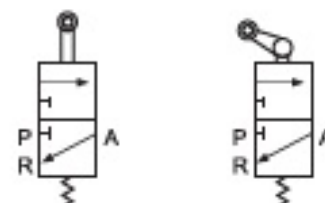




## S3 series mechanical valves

Symbol :



### Technical specifications

Model	S3R	S3L	S3V
Working medium	Air		
Acting mode	Direct acting type		
Port size	M5:M5 06:PT1/8 08:PT1/4		
Operating pressure	0~8kgf/cm <sup>2</sup>		
Working temperature	-5~60℃		
Lubrication oil	Not need		

### Reference models

#### S3R

Specification code  
 S3R: three-hole two-gang bidirectional rolling cam type mechanical valve  
 S3L: three-hole two-gang unidirectional rolling cam type mechanical valve  
 S3V: three-hole two-gang unidirectional vertical striking type mechanical valve

#### M5

Port size  
 M5:M5  
 06:PT1/8  
 08:PT1/4